



www.nrative.studio

info@nrative.sg

Since 2025

N:RATIVE

DECK

This deck offers a snapshot of our work in design, branding, strategy and research, motion, and digital. Reach out if you have questions or want to discuss your ideas further.



A short brief about us

N:RATIVE is a young, hybrid studio designing websites,
branding, and performance-marketing

/ 01

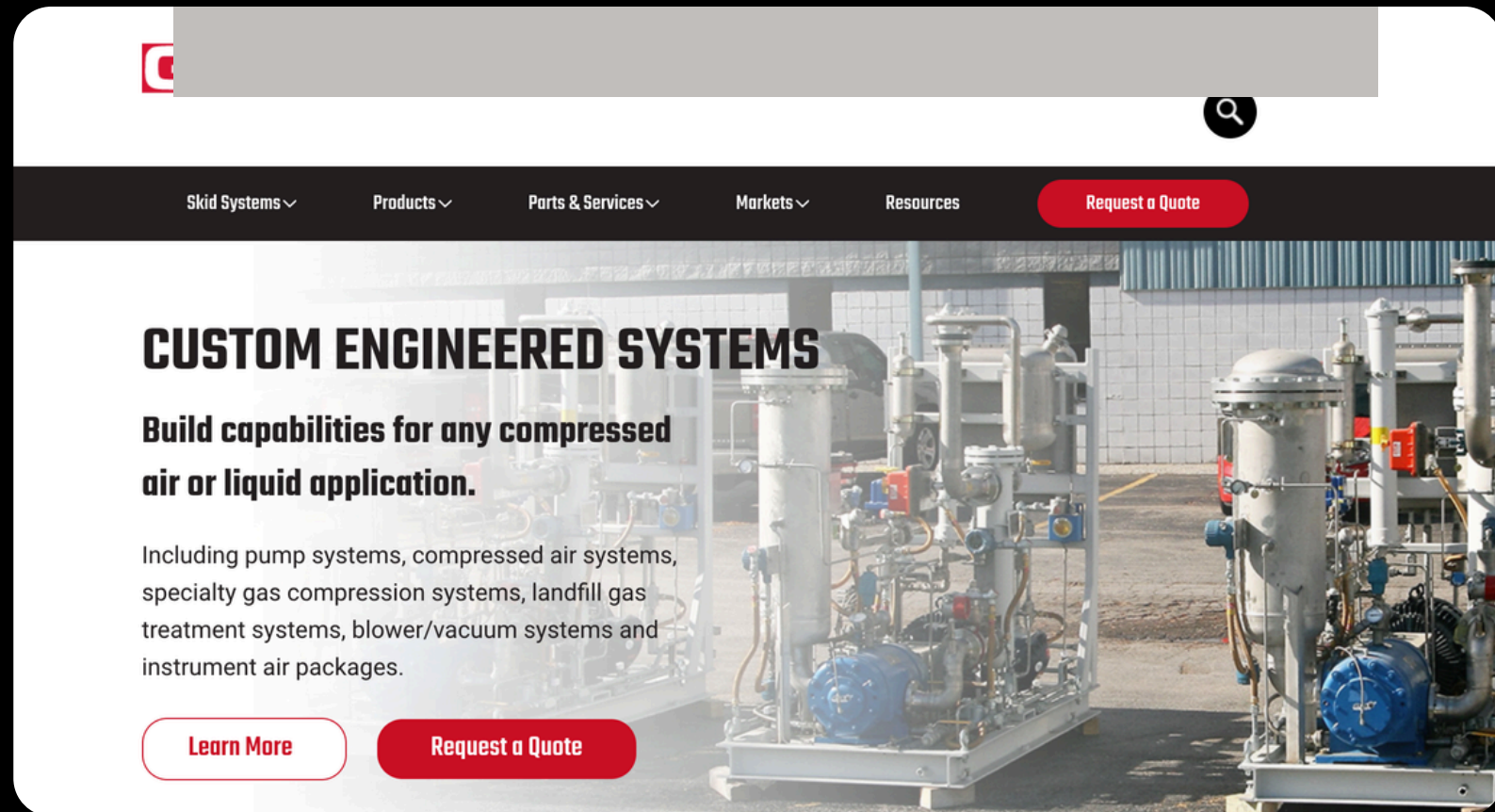
We use trends and marketing strategies to accelerate
your growth and make impact



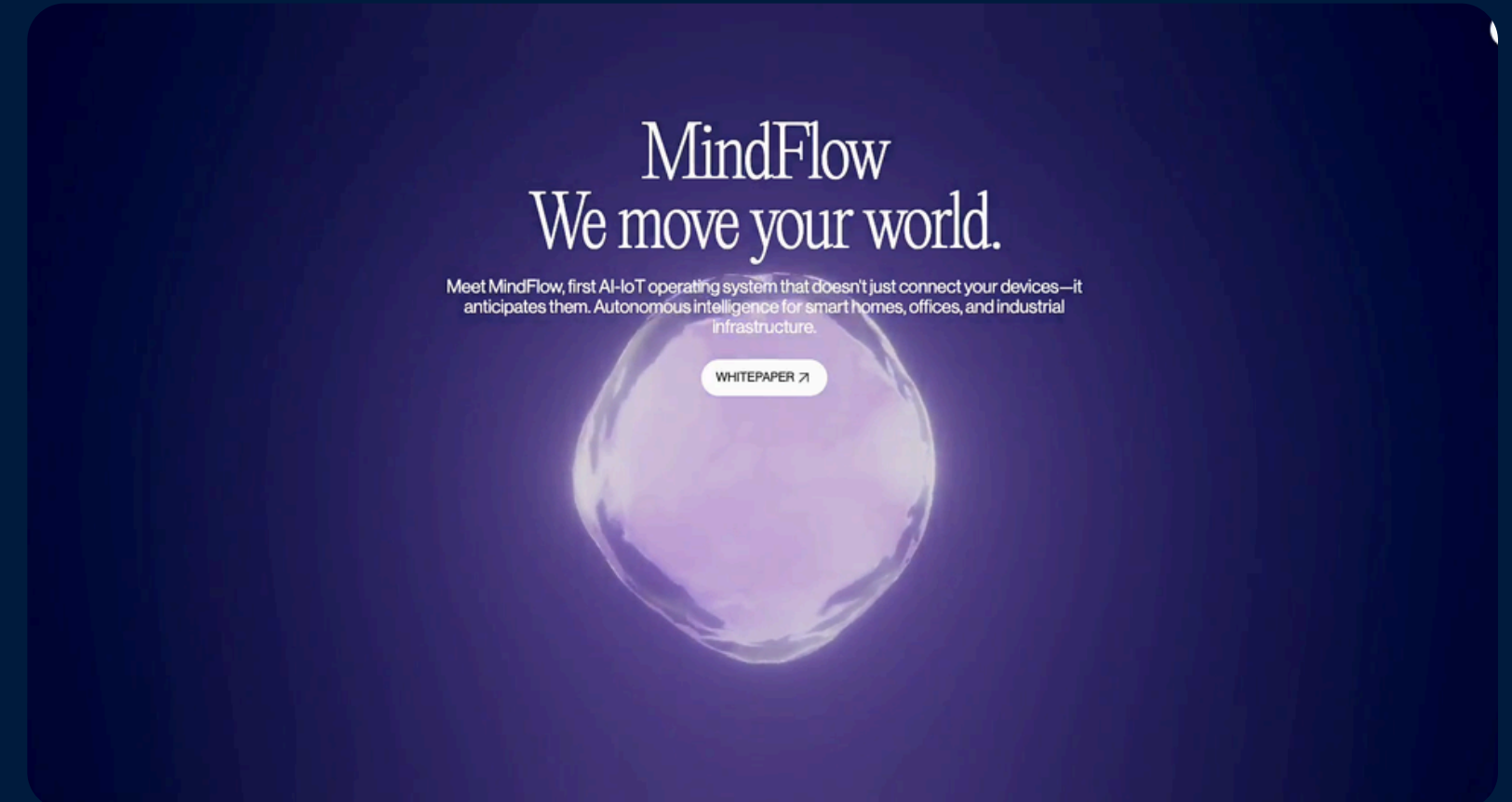
Other Agencies

 N:RATIVE

COMPARISON

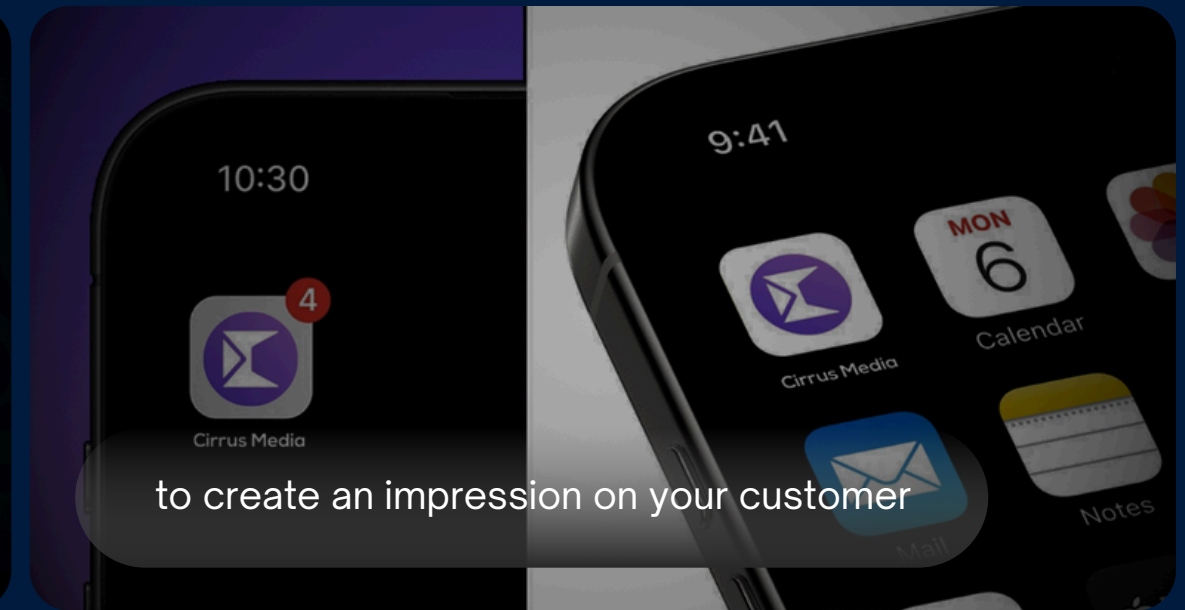


- Templated solutions
- Boring design



- Creative solution
- Memorable

The business value of design



How design drives revenue and success?

Reported by McKinsey, good design is one of the most vital catalysts for growth and returns that a company can employ.

“Design-driven companies achieve 32% higher revenue growth and 56% higher total shareholder return than their competitors in the same year.”

for every
\$300 spent

you are getting a rough estimation of \$650
to \$3000 in returns

4 members

ABOUT THE TEAM



We are a small team of specialists — researchers, strategists, designers and developers. We theorycraft on trends and presenting them in our solutions.



OUR COMPETENCIES

Custom websites, mobile-first layouts, and intuitive interfaces that reflect your brand

Visual identity systems, logo design, and guidelines that create lasting impressions

Audience insights, competitive analysis, and user journeys that inform every decision

Positioning, frameworks and content strategy that connect with the right audience

Scroll-driven animation and 3D elements that elevate the user experience

Custom development, performance optimization, and reliable ongoing support

WordPress

CMS

WebGL

UI/UX

Webflow

Shopify

Branding

SEO

Marketing

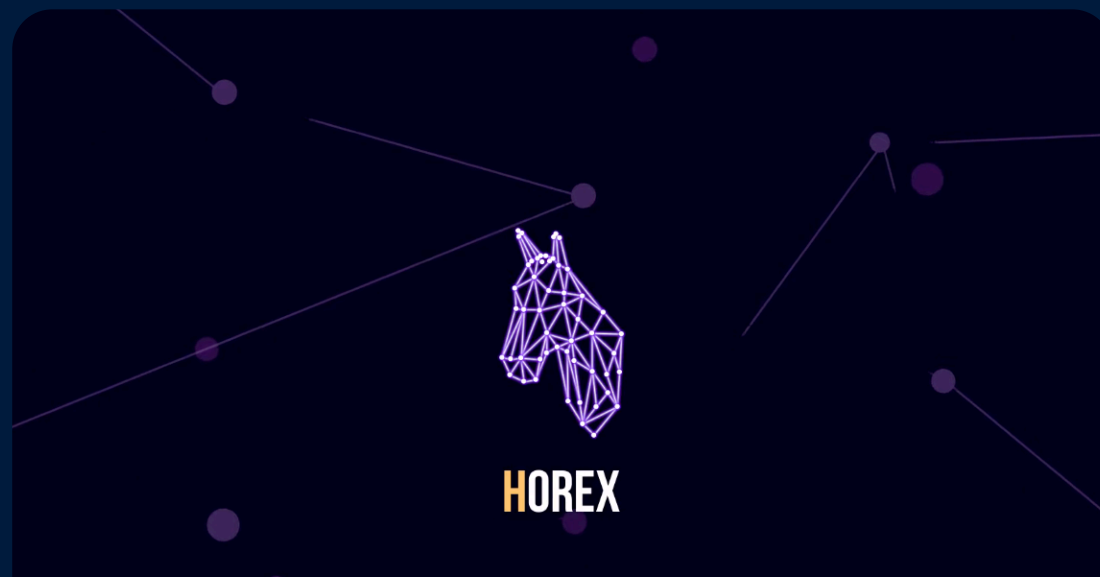
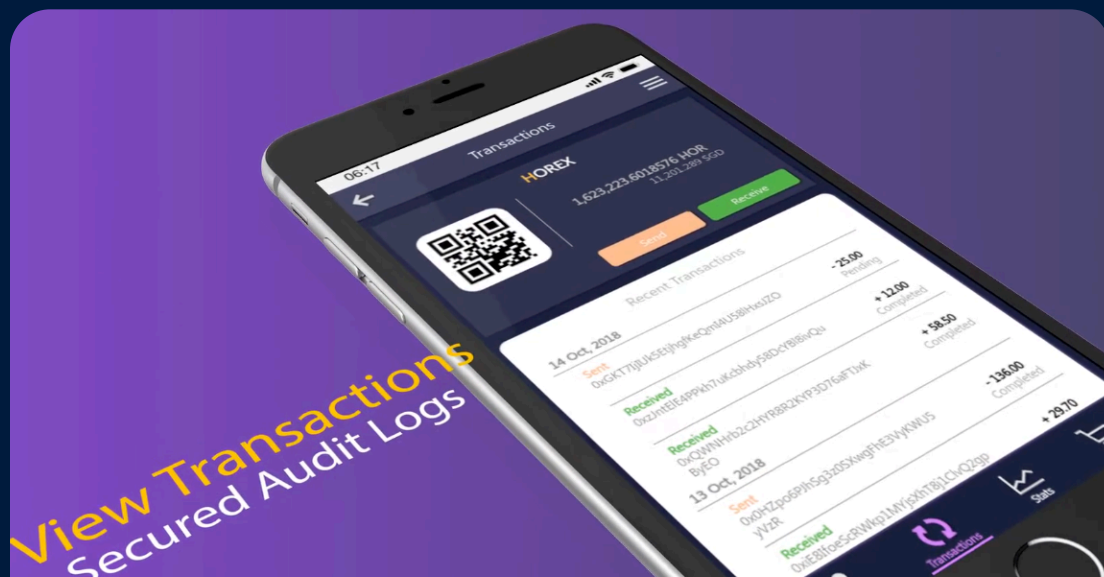
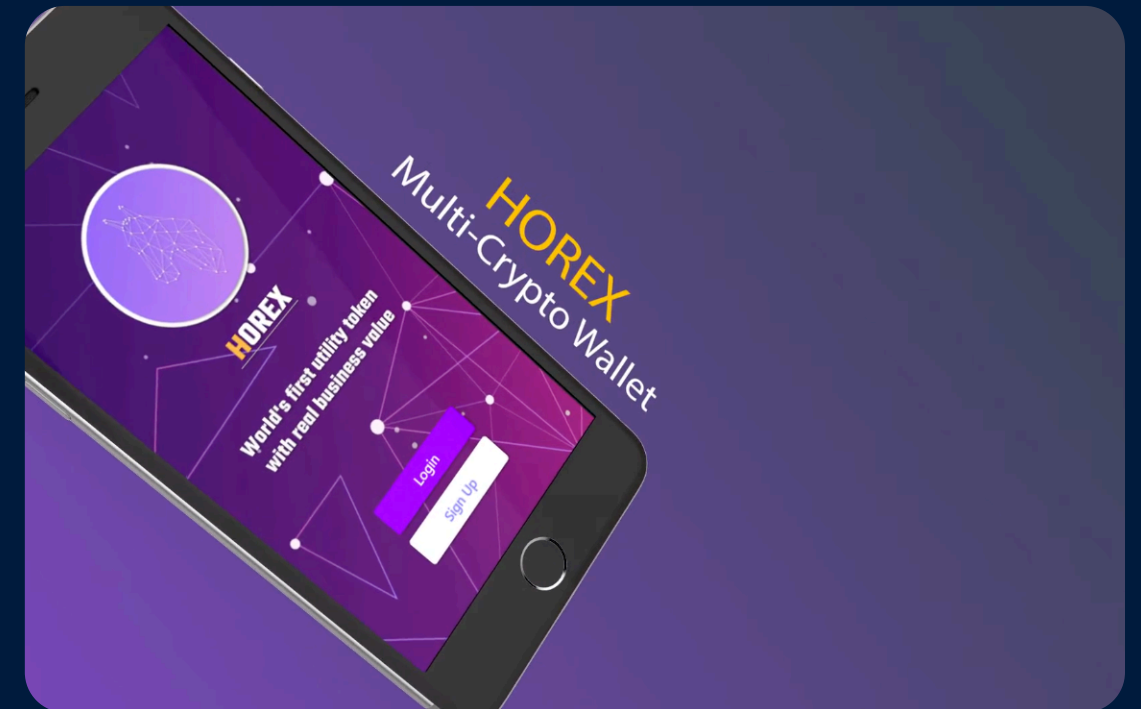
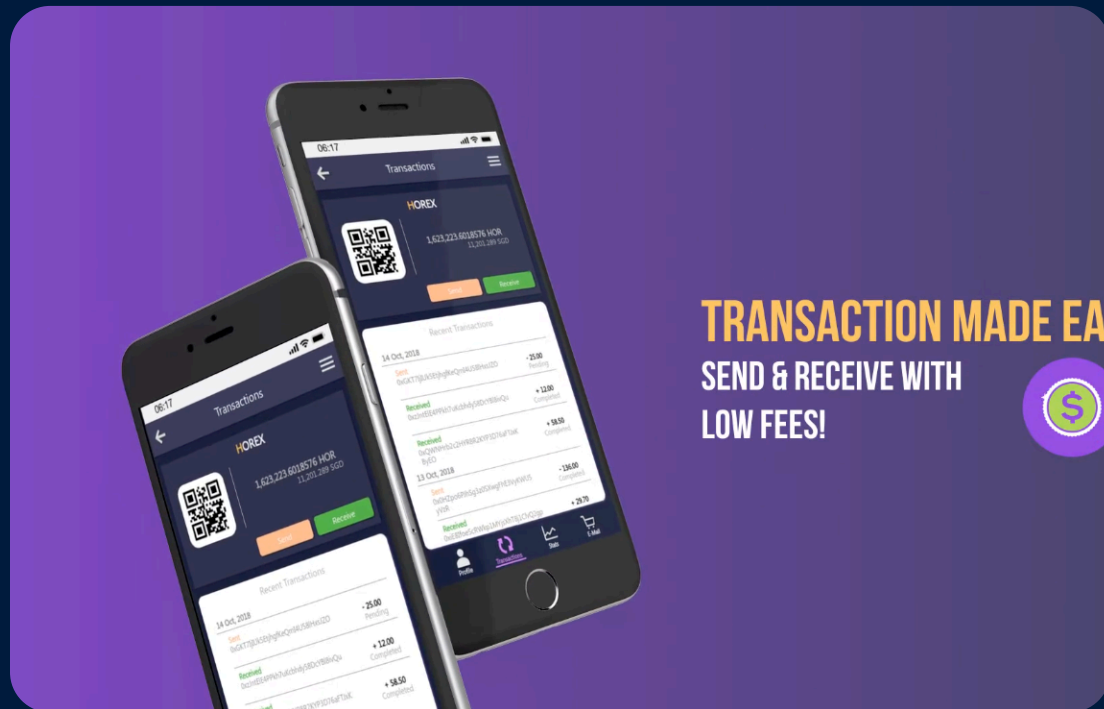
Development



HOREX

Mobile App Design

Campaign



FULIFE

Marketing

3D

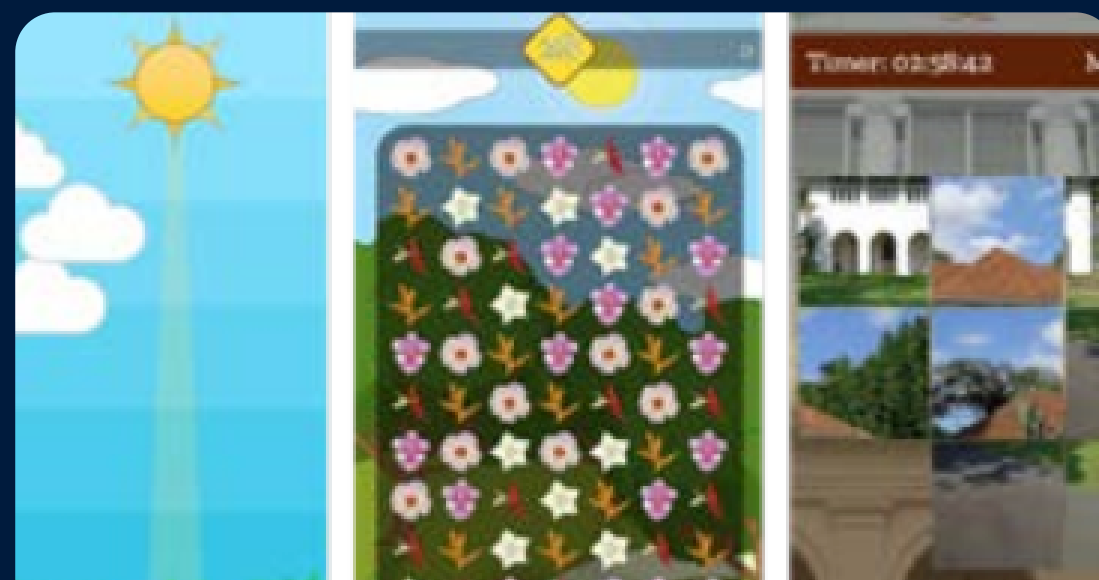
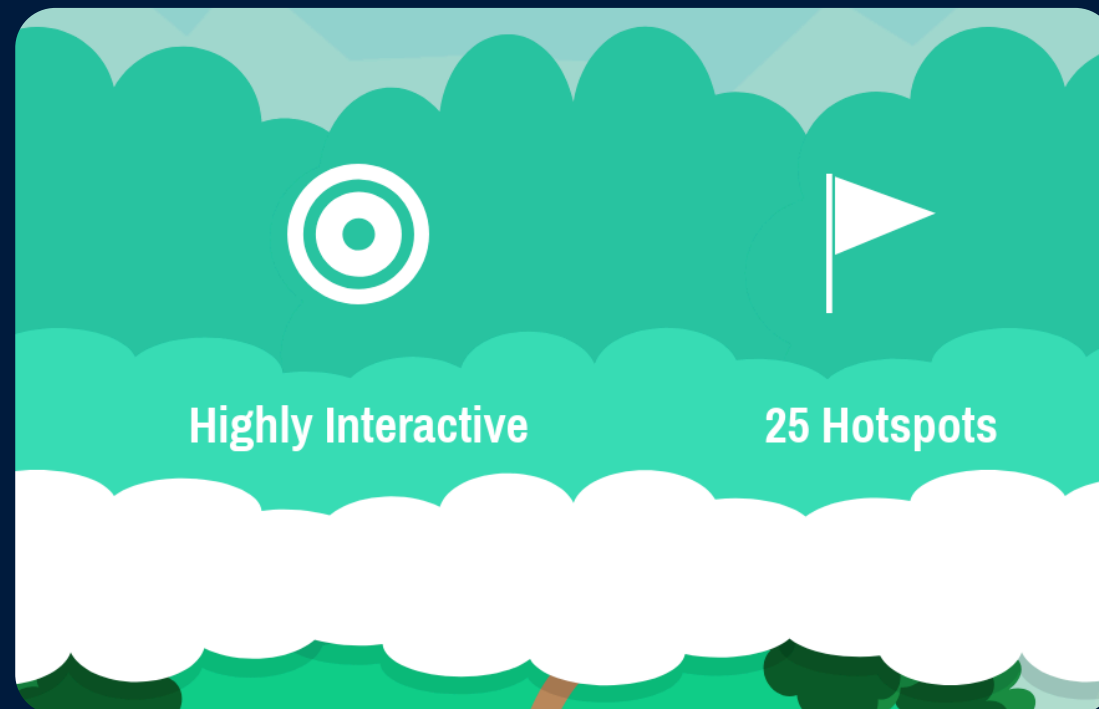


ISTANA OPEN HOUSE TRAIL

Mobile App Design

3D

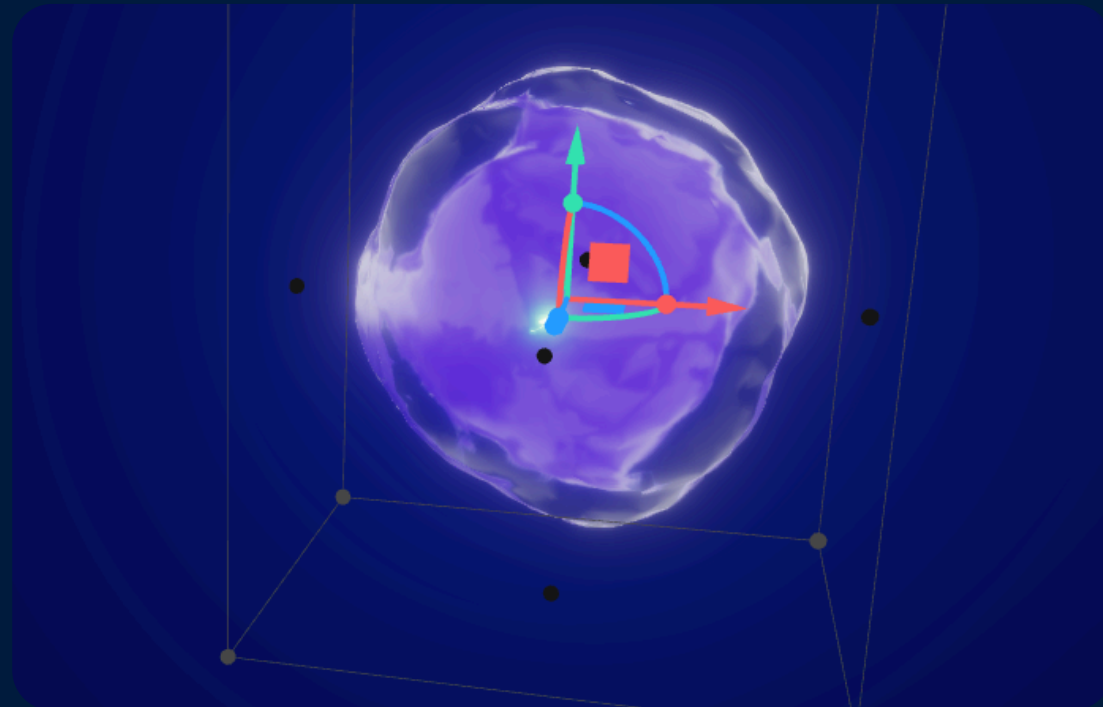
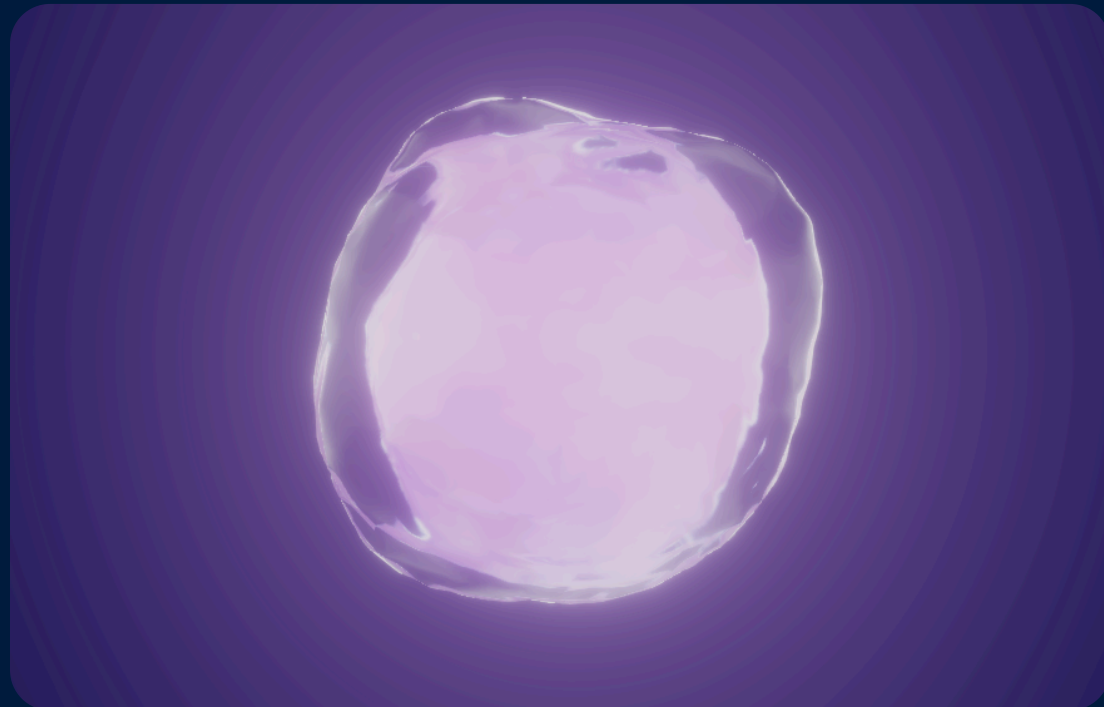
Immersive



MINDFLOW

Web Design

Immersive



MindFlow

We move your world.

Meet MindFlow, first AI-IoT operating system that doesn't just connect your devices—it anticipates them. Autonomous intelligence for smart homes, offices, and industrial infrastructure.

WHITEPAPER ↗

MindFlow is an edge infrastrutrue.

Edge Automation

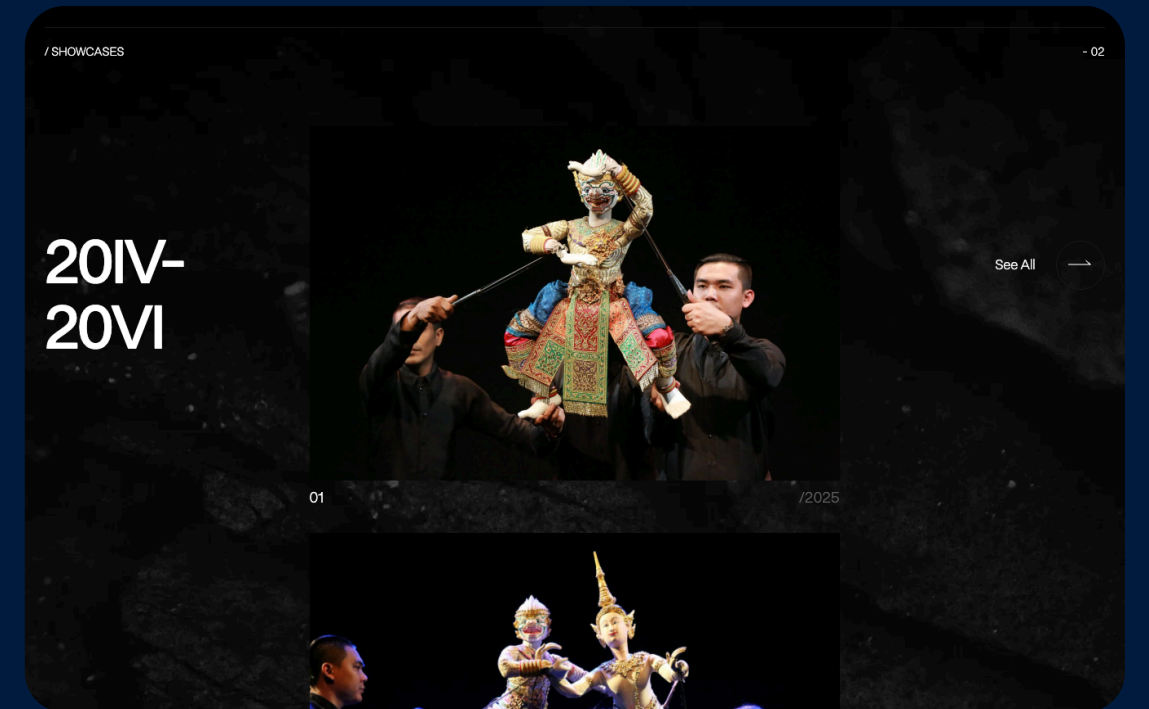
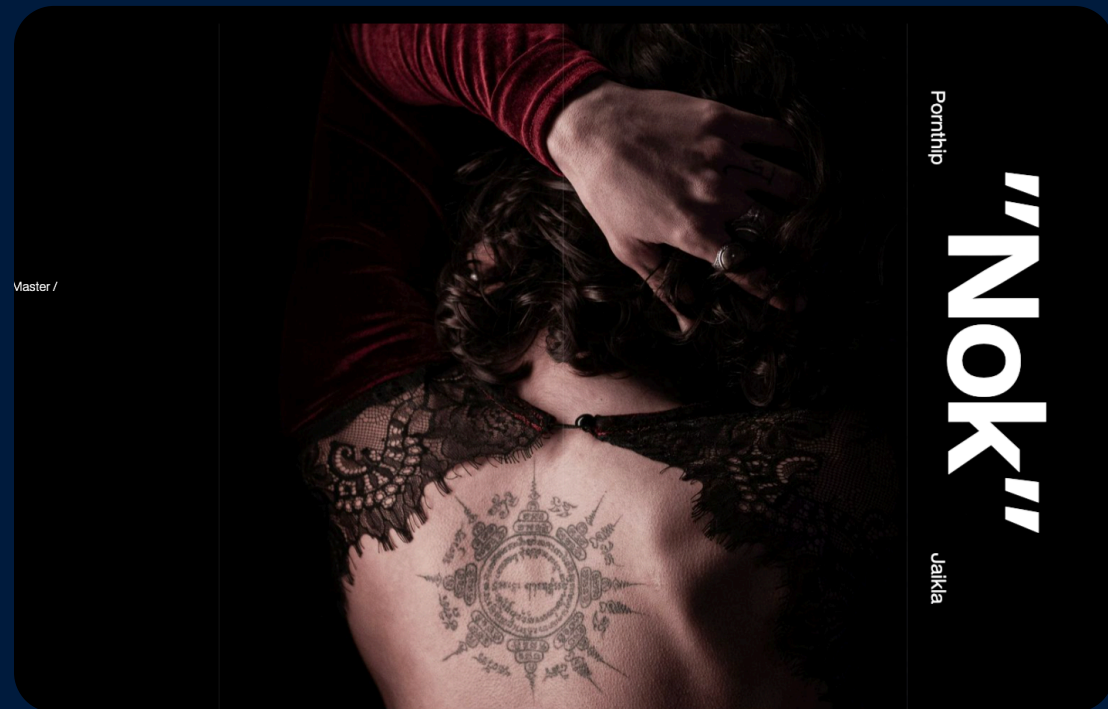
MindFlow runs on edge, uses contextual AI that understands why condit adapting workflows dynamically.

We made MindFlow a Unified Semantic Layer

As traditional protocol-specific silos require separate connectors for BACnet, Modbus, Zigbee, MindFlow abstracts all protocols into a single device-agnostic ontology—add any device, it works immediately.

NOK

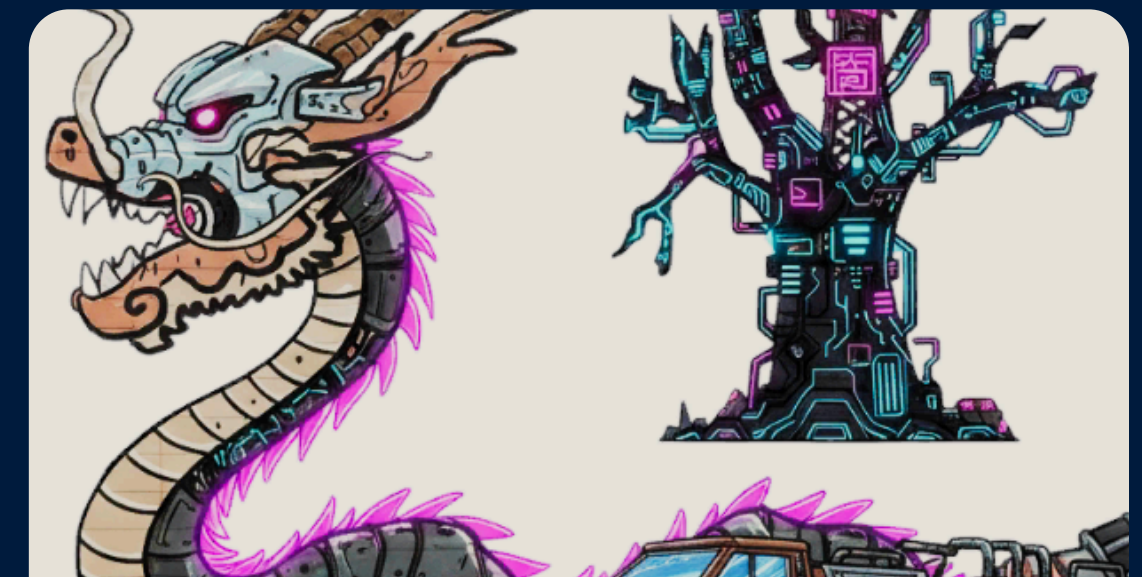
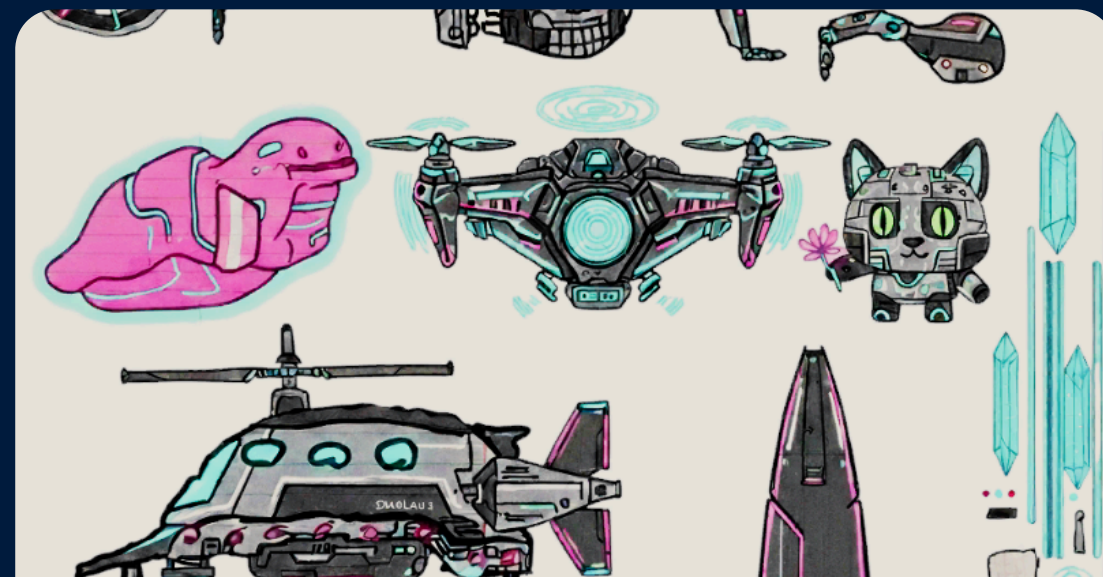
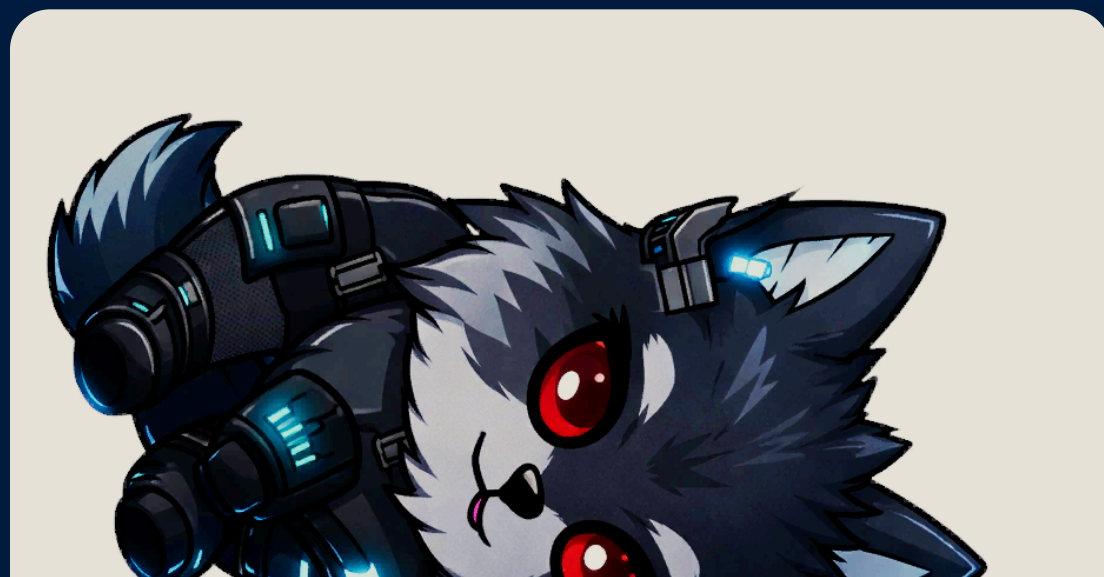
Web Design



REKONIX

Web Design

Immersive

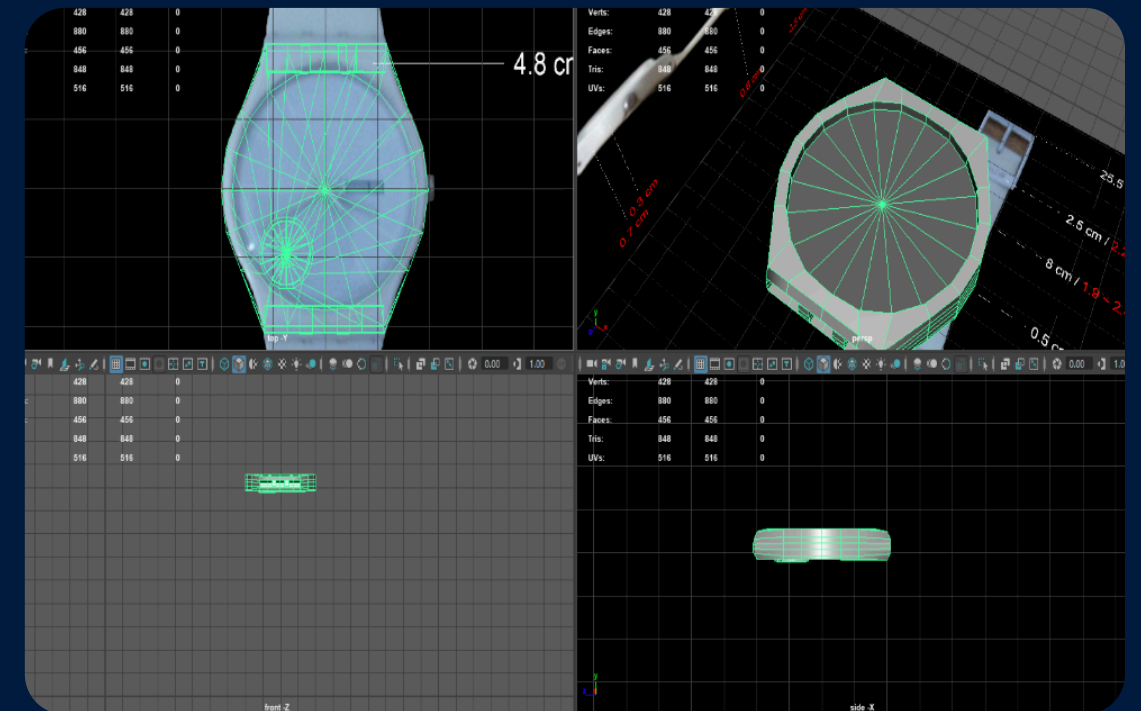


SWATCH

3D

Immersive

swatch[®] 



www.nrative.studio

info@nrative.sg

THANKS.

DESIGN X MARKETING

2026

